



School Grounds Development The Groundwork Approach

First Visit



Determine school's needs and priorities and visit areas of the grounds in need of improvement. Establish what funds are already available and make suggestions for additional funding sources. Groundwork will suggest a way forward but the school decides which approach to take; (i) a **Master Plan** for the entire school grounds; or (ii) a Detailed Design for a specific area/s within grounds.

(i) Master plan

Your school may opt to have a Master plan created for your grounds. This is a strategic plan which encompasses the different educational and recreational needs of the school into well-planned spaces. The design can be broken down into phases for completion and is very effective in accessing funding.

(ii) Detailed Design

Your school may not require a Master plan but wish to improve a specific area (e.g. foundation year playground, wildlife garden, etc.). This approach results in a detailed design. Once again the design can be effective in accessing funding, or if funds are already in place Groundwork can manage the implementation of the project on the schools behalf.

Staff Involvement



Staff will be consulted on their ideas and opinions for the school grounds by Groundwork staff who can offer ideas and advice from previous projects, and we will look to link these in with the school's development plan.

Pupil Involvement



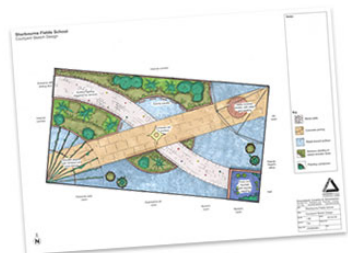
Groundwork believes that involving children in the design process helps encourage ownership and creates an opportunity to raise environmental awareness and develop skills in citizenship. Depending on the age and ability of children involved, classroom sessions will revolve around establishing children's ideas for the grounds or the children creating something to go into the grounds (e.g. tiles, mosaics, etc.).

Parent (Community) Involvement



There are several advantages to involving parents in the design and development of school grounds. It's an excellent way to increase parents' involvement in the school and their child's learning. Groundwork can offer a range of possible opportunities to get involved from the practical hands on to helping consult and design. From a practical point of view a lot of funding is only accessible through parental involvement for school grounds. Groundwork can help develop a parents group to access this.

The Design



Having collated all ideas and priorities, the Landscape Architect will use these to create a design for the school grounds.



Once this is complete a discussion will be needed to ensure the plan meets the school expectations and then make any necessary changes.

Implementing changes



If funds are in place, the school can opt for Groundwork to manage the contract on their behalf for the duration of the project. If funds are not in place, firstly the design will be effective in accessing funding and secondly Groundwork can be called back in at a later stage.

Groundwork is a leading environmental regeneration charity with many years experience working with schools to help raise educational attainment through school grounds improvements. While we are a non-for-profit organisation we do have to charge schools to cover the cost of staff time spent working with schools to complete the landscape designs.

Business Links and Volunteering Opportunities

Where possible, Groundwork endeavours to establish links between schools and local businesses. Alderman's Green Primary School in Coventry became part of a 'Greenlink' with B&Q during their project and were involved in visiting B&Q, studying the full range of environmental factors and impacts that the business' activities involve and reporting back to school on their findings.



Links are also established through the creation of volunteering opportunities, for example Groundwork linked a team of Land Rover/Jaguar graduates looking for a week long challenge, with Courthouse Green Primary School in Coventry.

The group designed and delivered a trim trail with an engineering theme using recycled materials to make musical instruments and other activities. They provided all their labour free of charge.

Groundwork Coventry & Warwickshire

Old Hall Farm • Whitestitch Lane • Packington Coventry • CV7 7JE

T 01676 524320 • F 01676 524350 • E co@groundwork.org.uk

Please visit our web site www.groundwork.org.uk